

BELL 212/412 INSTALLATION

MODULAR LIFE SUPPORT SYSTEM

System Overview:

- Quick change capability can be installed or removed from aircraft in less than 15 minutes and requires minimal modifications to the aircraft
- High quality, durable design and cost-effective installation
- Built aircraft-specific and customer-specific
- Allows for a variety of custom medical mounts and patient loading accessories

System Features:

- Fully self-contained and lightweight
 - 3500 liters of oxygen, dual air compressors, vacuum pump and 1000 watt inverter
 - AC outlets, DC outlet and dual pneumatic outlets
- Custom stretcher specifically designed for patient comfort
- Multiple IV Mounts

Spectrum Aeromed System Options:

- [2800 Series System](#)

Potential Installations:

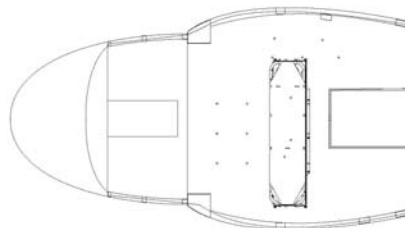
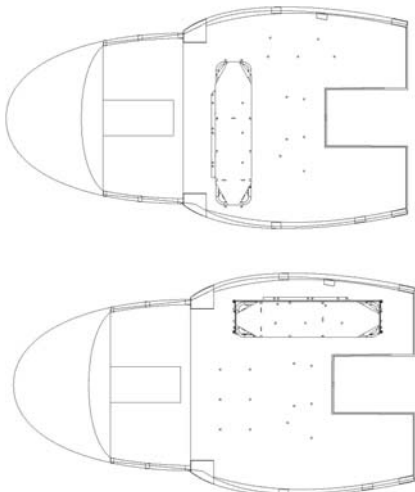
**Contact a Sales Representative for further Install Details*



Single 2800 Series System Install



Outside View- Single 2800 Series



Single 2800 Series System Installs