

# 5500 SERIES SYSTEM INSTALLATION

## MODULAR LIFE SUPPORT SYSTEM

### System Overview:

- High quality, durable design and cost-effective installation
- Built aircraft-specific and customer-specific
- Allows for a variety of custom medical mounts and patient loading accessories

### System Features:

- 12,000 liters of oxygen, dual air compressors and dual 1,000 watt inverter
- AC outlets and multiple pneumatic outlets
- Custom stretcher specifically designed for patient comfort
- Multiple IV Mounts
- Multiple lockable drawers

### Spectrum Aeromed System Options:

- [5500 Series System](#)

### Potential Installations:

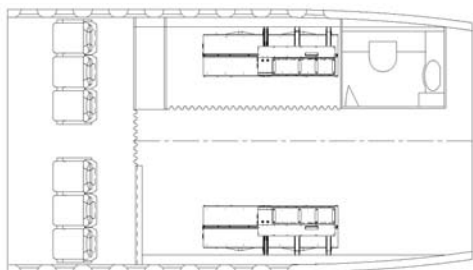
*\*Contact a Sales Representative for further Install Details*



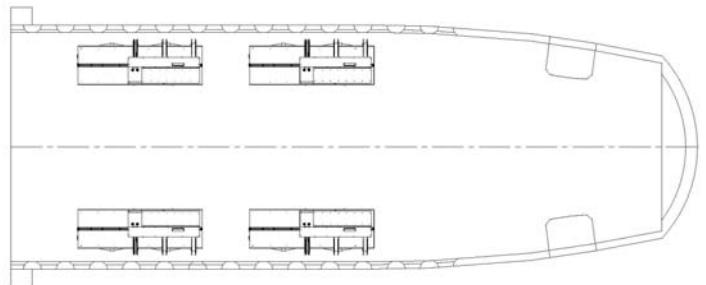
*5500 Series System Install with Drawers*



*5500 Series System Install*



*Dual 5500 Series System Install*



*Quad 5500 Series System Install*